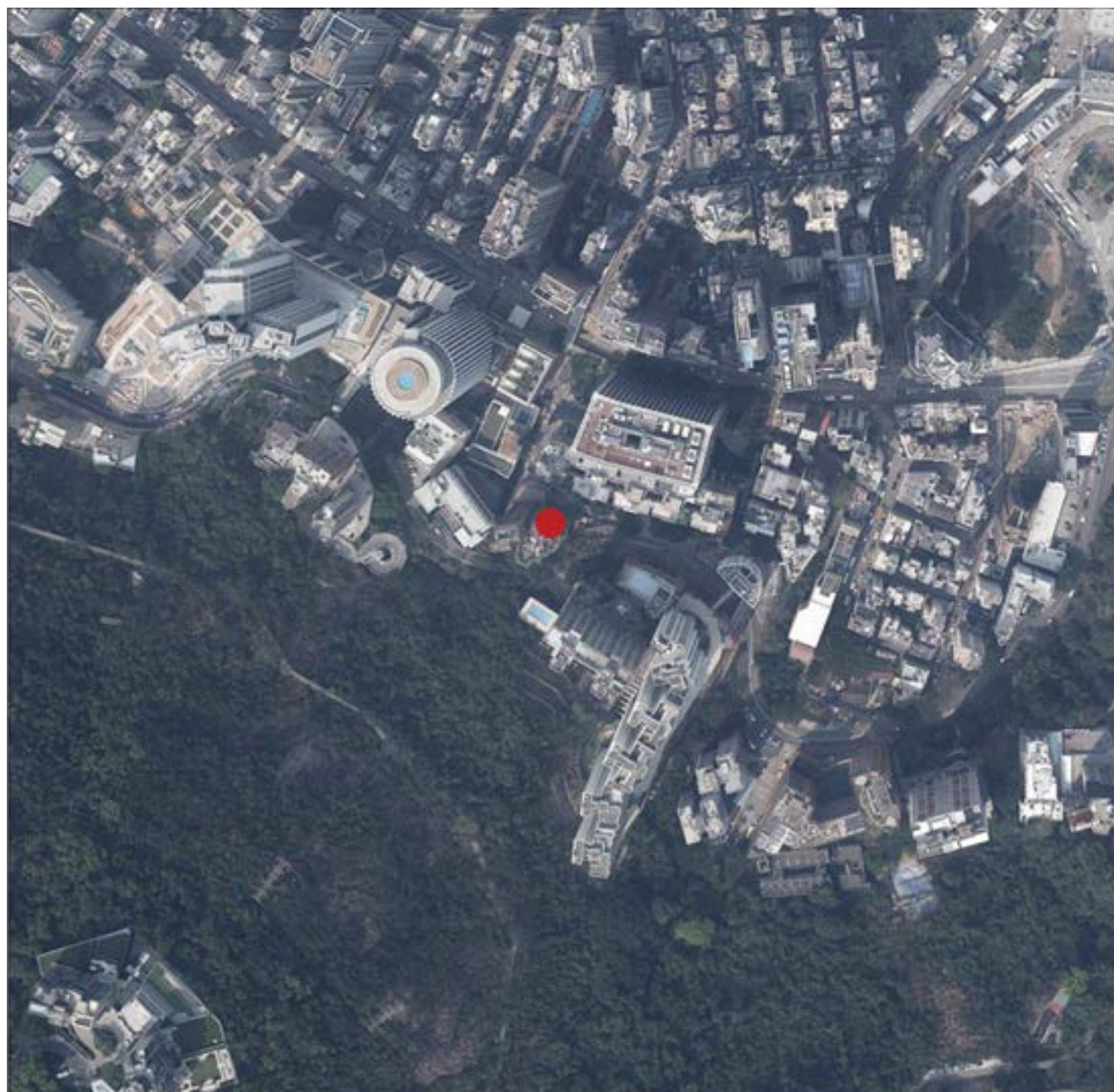


AERIAL PHOTOGRAPH OF THE DEVELOPMENT

發展項目的鳥瞰照片



Adopted from part of the Aerial Photograph taken by the Survey and Mapping Office of Lands Department at a flying height of 6,000 feet, photo No. E219060C, dated 8th March 2024.

摘錄自地政總署測繪處在6,000呎的飛行高度拍攝之鳥瞰照片，照片編號E219060C，飛行日期：2024年3月8日。

Survey and Mapping Office, Lands Department, The Government of HKSAR © copyright reserved - reproduction by permission only.

香港特別行政區政府地政總署測繪處版權所有，未經許可，不得複製。

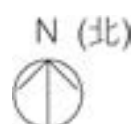
Notes:

1. The Aerial Photograph may show more than the area required under the Residential Properties (First-hand Sales) Ordinance due to technical reason.
2. The Vendor advises prospective purchasers to conduct an on-site visit for a better understanding of the Development site, its surrounding environment and the public facilities nearby.

備註：

1. 由於技術原因，鳥瞰照片可能顯示多於《一手住宅物業銷售條例》所要求顯示的面積。
2. 賣方建議準買家到有關發展地盤作實地考察，以對該發展地盤、其周邊地區環境及附近的公共設施有較佳了解。

● Location of the Development
發展項目的位置



AERIAL PHOTOGRAPH OF THE DEVELOPMENT

發展項目的鳥瞰照片



This blank area falls outside the coverage of the relevant aerial photograph
鳥瞰照片並不覆蓋本空白範圍

● Location of the Development
發展項目的位置



Adopted from part of the Aerial Photograph taken by the Survey and Mapping Office of Lands Department at a flying height of 6,000 feet, photo No. E226417C, dated 7th August 2024.

摘錄自地政總署測繪處在6,000呎的飛行高度拍攝之鳥瞰照片，照片編號E226417C，飛行日期：2024年8月7日。

Survey and Mapping Office, Lands Department, The Government of HKSAR ©
copyright reserved - reproduction by permission only.

香港特別行政區政府地政總署測繪處版權所有，未經許可，不得複製。

Notes:

1. The Aerial Photograph may show more than the area required under the Residential Properties (First-hand Sales) Ordinance due to technical reason.
2. The Vendor advises prospective purchasers to conduct an on-site visit for a better understanding of the Development site, its surrounding environment and the public facilities nearby.

備註：

1. 由於技術原因，鳥瞰照片可能顯示多於《一手住宅物業銷售條例》所要求顯示的面積。
2. 賣方建議準買家到有關發展地盤作實地考察，以對該發展地盤、其周邊地區環境及附近的公共設施有較佳了解。

AERIAL PHOTOGRAPH OF THE DEVELOPMENT

發展項目的鳥瞰照片



This blank area falls outside the coverage of the relevant aerial photograph
鳥瞰照片並不覆蓋本空白範圍

● Location of the Development
發展項目的位置



Adopted from part of the Aerial Photograph taken by the Survey and Mapping Office of Lands Department at a flying height of 6,000 feet, photo No. E226418C, dated 7th August 2024.

摘錄自地政總署測繪處在6,000呎的飛行高度拍攝之鳥瞰照片，照片編號E226418C，飛行日期：2024年8月7日。

Survey and Mapping Office, Lands Department, The Government of HKSAR © copyright reserved - reproduction by permission only.

香港特別行政區政府地政總署測繪處版權所有，未經許可，不得複製。

Notes:

1. The Aerial Photograph may show more than the area required under the Residential Properties (First-hand Sales) Ordinance due to technical reason.
2. The Vendor advises prospective purchasers to conduct an on-site visit for a better understanding of the Development site, its surrounding environment and the public facilities nearby.

備註：

1. 由於技術原因，鳥瞰照片可能顯示多於《一手住宅物業銷售條例》所要求顯示的面積。
2. 賣方建議準買家到有關發展地盤作實地考察，以對該發展地盤、其周邊地區環境及附近的公共設施有較佳了解。